

Select ComEd customers in northern Illinois now have the benefit of “smart meters.”

What is a Smart Meter?

A smart meter is an advanced digital electric meter that reports usage information every 30 minutes and sends that information to ComEd through a wireless connection.

In October 2009, the Illinois Commerce Commission approved ComEd’s proposal to install smart meters in part of its service territory in order to assess how technology can improve service, help you make more informed decisions about electricity use and contribute to lower electricity costs and reduced carbon emissions.

Smart Meter systems:

- Provide daily usage information, accessible through the Internet, to help you monitor electricity use and manage electricity costs.
- Enable ComEd customer services representatives to view your actual usage data, and answer questions about power status and billing, without having to wait for a technician to visit your home/business.

If you have a smart meter, you can check your usage online. Your customized Web page will help you track your usage, provide electricity comparisons and give you details on how to reduce your electricity costs.

SO WHAT DOES THIS MEAN FOR YOU?

Smart meter systems provide you with electricity usage information and the power to manage it

- Watch how your electricity usage habits affect your bill
- Make more informed choices on how to use your electricity
- See how your household’s electricity usage compares to similar homes in your area
- Learn how to conserve electricity and help the environment

You now have more information at your fingertips that can translate into real cost savings. *No more waiting for the bill to come in the mail to know how much electricity you have used.*



Residents can obtain more information about the Smart Meter program at <http://www.ComEd.com/smartmeter>.

Toll-free hotline:
1-800-EDISON1

Commonwealth Edison
Company
P.O. Box 805379
Chicago, IL 60680-5379

©2010 Commonwealth Edison

ComEd®

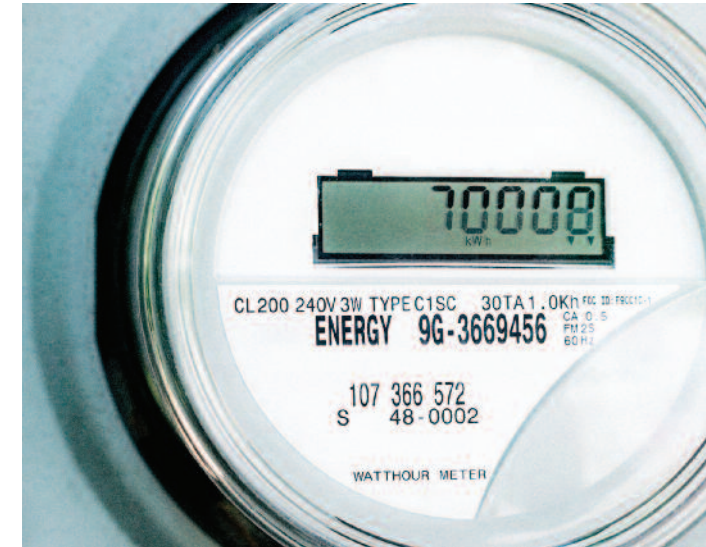
An Exelon Company

www.ComEd.com

ComEd®

An Exelon Company

**SMART METERS: HELPING YOU
USE YOUR POWER WISELY**



Use Smart Meter Tools to Check, Change and Save

CHECK

ComEd has set up an online Web page that lets you monitor your own electricity usage. The site will provide easy-to-understand tools to help you track your individual usage and also see how your usage compares to your neighbors. The site will showcase a variety of energy saving techniques and calculate a projection of your monthly bill in advance based on your current level of usage.

As an added benefit, some customers also will receive periodic Home Energy Reports in the mail that will

provide a summary of usage throughout this special program. The reports help show how your household is using electricity compared with previous months and include energy saving tips.

CHANGE

ComEd now can give you access to more specific information on what you can do to save money and lower your electricity usage. When you log on to the site, you will automatically be given a list of choices – tailored just for you – that will help you save money. For instance, if you are using a lot of electricity during the summer, you'll find tips on air conditioner use.

SAVE

By taking part in this program, ComEd hopes you will save money and conserve energy. We know from similar programs that customers who learn about their electricity usage and take easy steps to reduce it will see a noticeable drop – in both their usage and their bills.

HELP SHAPE THE FUTURE

Customers in nine communities and the Humboldt Park neighborhood in the City of Chicago are part of an important program to potentially shape the modernization of the existing electrical system.

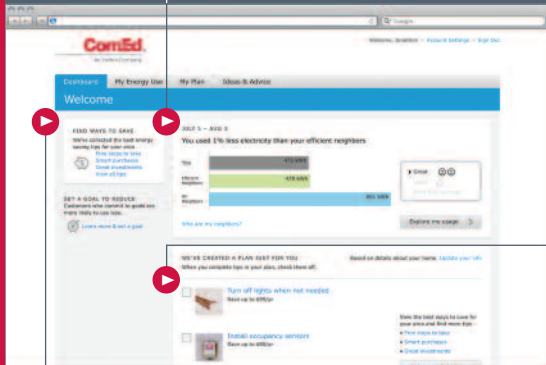
The Smart Meter program is a comprehensive test of advanced technology. During the one-year program, ComEd will learn more about:

- Operational benefits including improved service and safety
- Customer benefits
- Societal benefits such as greenhouse gas emission reduction.



At the end of the program, ComEd will evaluate what it learned and make a recommendation to the Illinois Commerce Commission for its review and determination how new technology could transform the way energy is delivered and open more choices to customers.

What You'll See...



CHECK

Your usage will be available along with easy-to-understand comparisons to other similar households.

CHANGE

Check out our helpful hints to make changes and save money.

SAVE

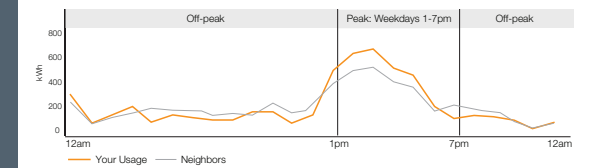
Every day we will provide you information to help you save money.



Learn About Your Usage

Your usage throughout the day

Your average weekday hourly usage last month compared to your neighbors:



You used 36% more than your neighbors during peak times. Did you know? Using less during peak times prevents brown-outs and saves money.